

# BRENDA MCNEILL

*Art of Leisure*<sup>SM</sup>

As someone who moved from the Bay Area to Sonoma Valley almost 30 years ago, I have curated a few “favorite spots” in Sonoma which are pet friendly. Having lived in both the hills and in town, with large and small pets, these “spots” capture the Wine Country Lifestyle experience beautifully.

## *Four legged friend spots*

### Places to take a walk:

- Jack London Park – wolf house [www.jacklondonpark.com](http://www.jacklondonpark.com)
- Sonoma High School Athletic Field [www.sonomaschools.com](http://www.sonomaschools.com)
- Sonoma Bike Path [www.sonoma.com](http://www.sonoma.com)
- Sonoma Valley Regional Park [parks.sonomacounty.ca.gov](http://parks.sonomacounty.ca.gov)

### Pet friendly lodging:

- Four Sisters, Inn at Sonoma [www.innatsonoma.com](http://www.innatsonoma.com)
- Sonoma Creek Inn [www.sonomacreekinn.com](http://www.sonomacreekinn.com)
- The Lodge at Sonoma, Resort [www.marriott.com](http://www.marriott.com)
- Fairmont Sonoma Mission Inn & Spa [www.fairmont.com/sonoma/](http://www.fairmont.com/sonoma/)

### Wineries which especially welcome pets:

- Gundlach Bundschu Winery [www.gunbun.com](http://www.gunbun.com)
- Larson Family Winery [www.larsonfamilywinery.com/](http://www.larsonfamilywinery.com/)

### Pet Health:

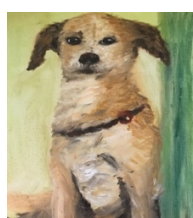
- Valley of the Moon Veterinary [www.vomvet.com](http://www.vomvet.com)
- Arroyo Veterinary [www.avhsonoma.com](http://www.avhsonoma.com)

### Pet Boarding:

- Vintage Kennel Club [www.vintagekennelclub.com](http://www.vintagekennelclub.com)
- Maranda Ranch Kennels [www.marandaranch.com](http://www.marandaranch.com)

### Pet Adoption:

- Pets Lifeline [www.petslifeline.org](http://www.petslifeline.org)



these are simple paintings which I did of pets who were looking for a new home at Pets Lifeline in Sonoma

*Local*

*Authentic*

*Sonoma*

BRENDA MCNEILL *Art of Leisure*. / Lic.#01862410 / 707.339.9133 / [WWW.BRENDAMCNEILL.COM](http://WWW.BRENDAMCNEILL.COM)